

**OPERATING INSRTRUCTIONS AND PARTS LIST
INSTRUCCIONES DE OPERACIÓN Y LISTA DE PIEZAS**



STONEMATIC

MODELS: **SM-10150**
SM-10200

CONTENTS / CONTENIDO

ENGLISH	2-3
ESPAÑOL	4-5
PARTS LISTS/LISTA DE PIEZAS	6-8
WIRING DIAGRAMS.....	8-9
DIAGRAMA DE CABLADO ELÉCTRICO....	8-9
WARRANTY/GARANTÍA	11



0A7580
Copyright © October, 2001 DBInc.
Printed in U.S.A.

DIAGRAM 1 - STONEMATIC™ MODELS: SM-10150, SM-10200

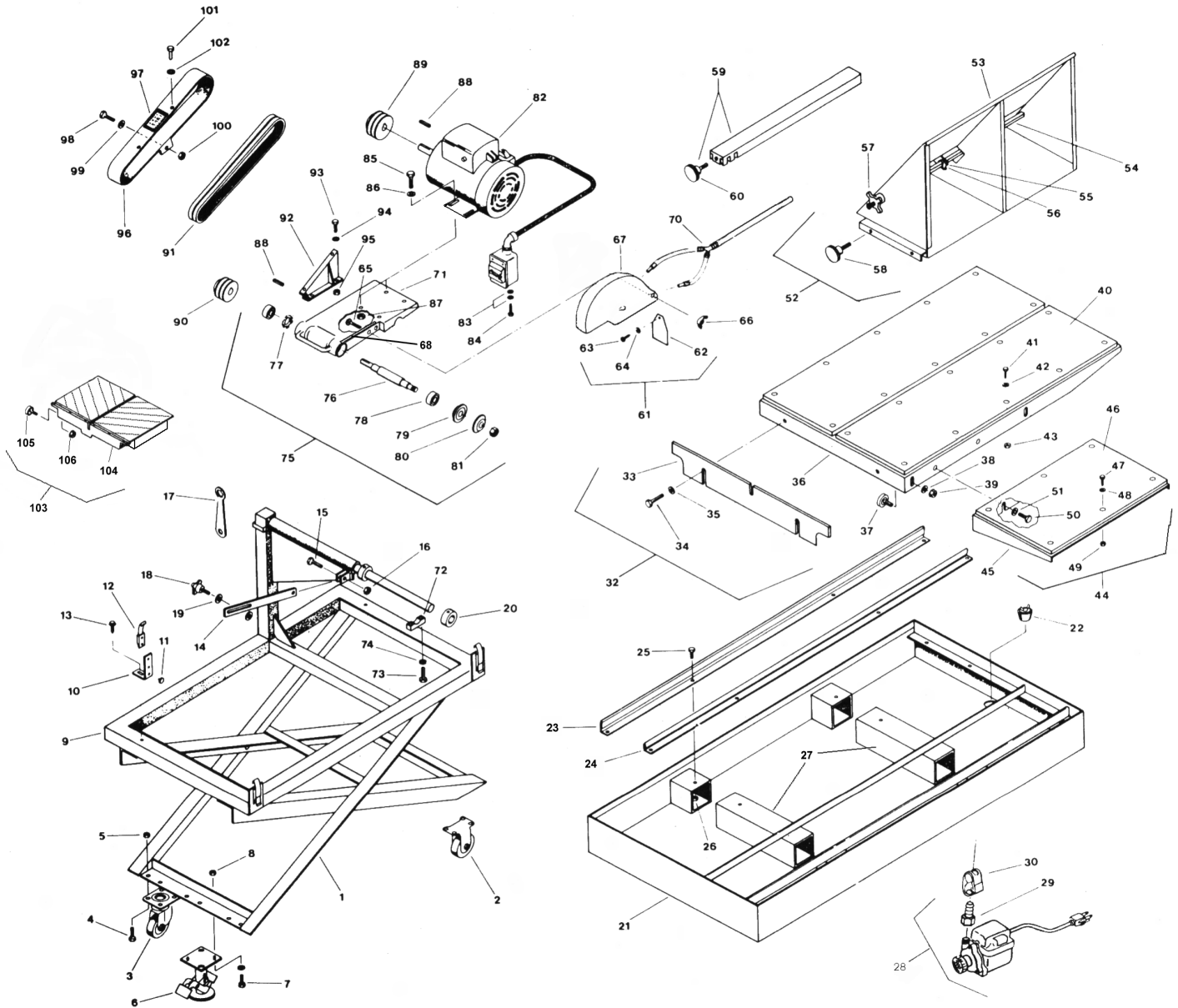
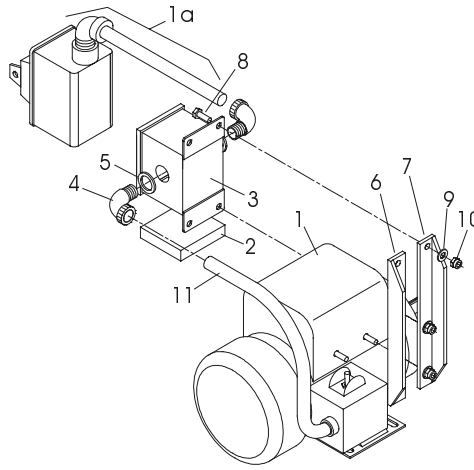


DIAGRAM 1 - PARTS LIST (10/22/01)

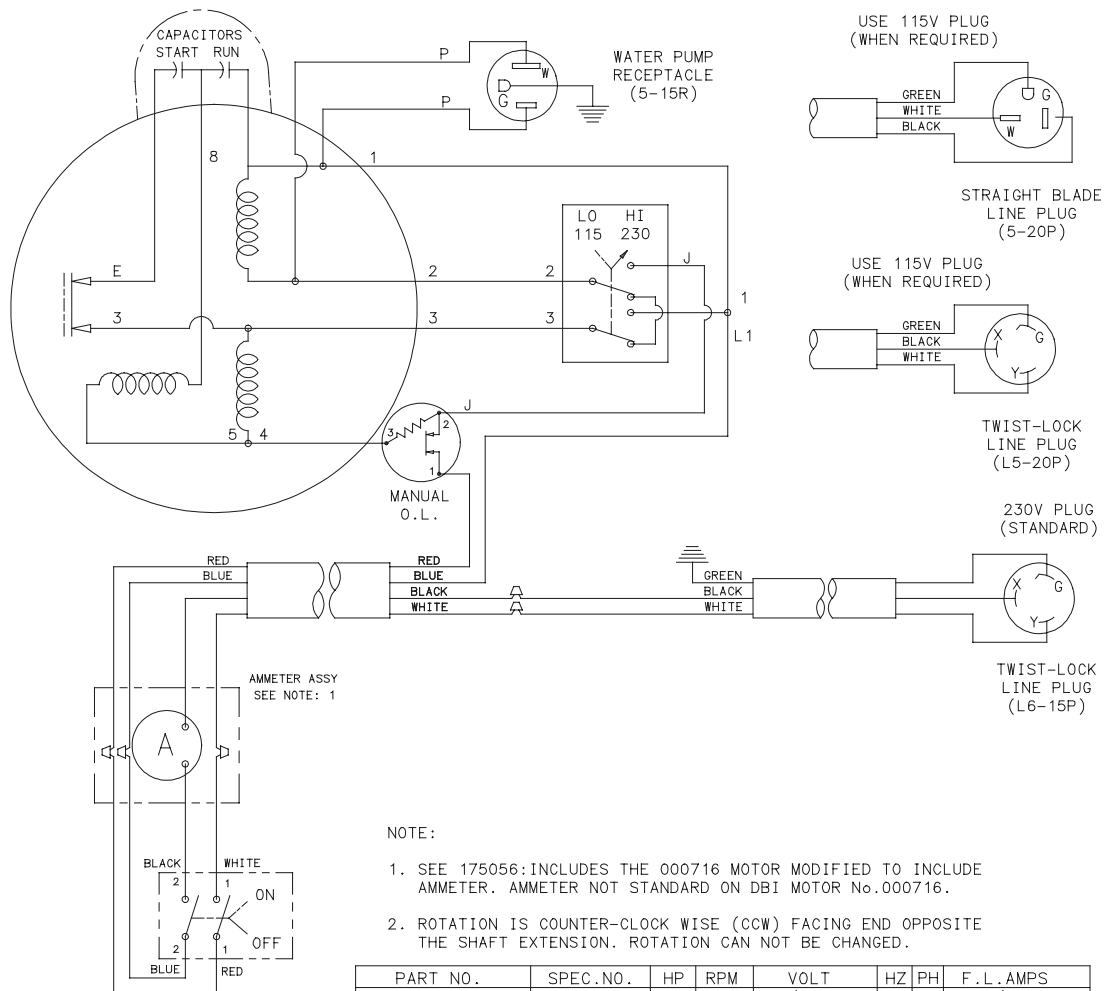
DIAG. LOC.	PART NO.	QTY. REQ.	DESCRIPTION	DIAG. LOC.	PART NO.	QTY. REQ.	DESCRIPTION
1	161634	1	Stand Weldment	59	161693	1	Rip Guide Assembly
2	161671	2	Rigid Castor	60	020323	1	Capscrew, Hex Hd. 3/8"-16 x 1"
3	161670	2	Swivel Castor	61	169580	1	Blade Guard Assy 10" (Incl. 23-31, 82)
4	021416	16	Capscrew, Hex Hd, 5/16"-18 x 1"	62	169365	1	Guard, Splash
5	020197	16	Locknut, Fiber, 5/16"-18	63	169366	1	Screw, Pan Hd, Self-Tapping, #8 x 3/8"
6	161687	4	Floor Lock	64	020739	1	Washer, Flat #10
7	048740	4	Capscrew, Hex Hd, 3/8"-16x1-1/4"	65	020126	1	Bolt, Carriage, 5/16"-18 x 1-3/4"
8	020199	4	Locknut, Fiber, 3/8"-16	66	020245	1	Locknut, Wing, 5/16"-18
9	161600	1	Frame Weldment	67	169532	1	Blade Guard, 10"
10	161658	2	Pan Stop Assy (Incl.11-12)	68	163248	1	Rubber Strip, Sponge
11	051065	4	Plastic Tabs	69	---	--	-----
12	197044	4	Latch	70	169564	1	Water Tube Assy, 1/4"Y x 72"
13	020489	2	Screw, Hex Hd, Self-Tapping 1/4"-20x3/4"	71	171032	1	Motor Base
14	161632	1	Lock Bar	72	189661	2	Bearing Cap
15	020373	1	Capscrew, Hex Hd, 5/16"-18 x 1-1/2"	73	020785	4	Lockwasher, Split, 5/16"
16	020197	1	Locknut, Fiber, 5/16"-18	74	020441	4	Capscrew, 5/16"-18 x 1-3/4"
17	161641	1	Wrench, Blade Shaft 15/16" x 9/16" Box	75	052004	1	Blade Shaft Assy (Incl. 58-63)
18	169486	1	Hand Knob, 5/16"-18 x 1"	76	052006	1	Shaft, Blade
19	020763	1	Washer, Flat, SAE 5/16"	77	071110	1	Washer, Spring
20	043260	2	Set Collar	78	071081	2	Bearing, Blade Shaft
21	161661	1	Pan	79	169522	1	Flange, Inner
22	030386	1	Drain Plug	80	169523	1	Flange, Outer
23	161624	2	Rail, Large Outer	81	020176	1	Nut, Thin Hex, 5/8"-18
24	161626	2	Rail, Small Inner (Optional)	82	000605	1	Motor & Switch Assy, 1.5 HP, 115V-230/60/1
25	020301	16	Capscrew, Hex Hd, .25-20 x 5/8"	--	175056	1	Motor & Switch Assy, 2 HP, 115-230V/60/1
26	020195	16	Locknut, Fiber 1/4"-20	--	161706	1	(000716 Modified w/ Ammeter Assy)
27	169635	2	Support, Inner Rail (Optional)	--			Motor & Switch Assy, 2 HP
28	161316	1	Water Pump Assembly, 115V/60/1				240/50/1 (000607 w/ Decals)
--	050216	1	Water Pump Assembly, 230V/50/1	83	020741	4	Washer, Flat, 1/4"
29	197237	1	Hose Barb 1/4" NPT x 1/4" OD	84	020489	2	Screw, Hex Washer Hd, 1/4"-20 x 3/4"
30	161134	1	Valve, Flow Control	85	021416	4	Capscrew, Hex Hd, 5/16"-18 x 1"
31	----	--	-----	86	020742	4	Washer, Flat, 5/16"
32	161663	1	Conveyor Cart Assy (Incl. 33-43)	87	020197	4	Locknut, Fiber, 5/16"-18
33	161751	1	Back Stop	88	020060	2	Key, 3/16" Sq. x 1"
34	048740	2	Capscrew, Hex Hd, 3/8"-16x1-1/4"	89	030906	1	Pulley, 2G3V2.25 - .875 w/SS
35	020743	2	Washer, Flat, 3/8"				(For 1-1/2HP & 2HP)
36	161662	1	Cart Weldment	90	161696	1	Pulley, Blade Shaft 2G3V2.00 - .625 w/SS
37	030822	4	Wheel, Cart				(For 1-1/2 HP & 2 HP)
38	020763	4	Washer, Flat, SAE 5/16"	91	058020	2	V-Belt, 3VX280
39	032366	4	Nut, KEPS, 5/16"-18	92	169499	1	Mounting Bracket, Belt Guard
40	161622	2	Cutting Board, Cart	93	020370	4	Capscrew, 1/4"-20 x 3/4"
41	020411	12	Machine Screw, Hex Hd, #10-24 x 3/4"	94	020262	4	Washer, Flat, 1/4"
42	020739	12	Washer, Flat #10	95	020195	4	Locknut, Fiber, 1/4"-20
43	020194	12	Locknut, Fiber, #10-24	--	169581	1	Belt Guard Assy (Incl. 96-102)
44	161666	1	Extension Cart Assembly	96	051131	1	Belt Guard
45	161667	1	Extension Cart Weldment	97	169343	1	Decal: Warning/Caution
46	161623	1	Cutting Board, Ext.	98	021416	1	Capscrew, Hex Hd, 5/16"-18 x 1"
47	020411	4	Machine Screw, Hex Hd, #10-24 x 3/4"	99	020763	1	Washer, Flat, SAE, 5/16"
48	020739	4	Washer, Flat #10	100	020197	1	Locknut, Fiber, 5/16"-18
49	020194	4	Locknut, Fiber, #10-24	101	021423	2	Capscrew, Hex Hd, 1/4"-20 x 1/2"
50	020323	2	Capscrew, Hex Hd, 3/8"-16 x 1"	102	020762	2	Washer, Flat, 1/4"
51	020743	2	Washer, Flat, 3/8"	103	169573	1	Cart Assy, Conveyor (Incl. 104-106)
52	161707	1	Miter Guide Assy. (Incl. 53-58)				in Optional Deluxe Package
53	161650	1	Mitre Guide Weldment	104	169576	1	Cart, Conveyor w/ V-Top
54	161655	1	Locking Bolt	--	030049	1	Wheels-Set of 4 (Incl. Items 105 & 106)
55	050106	1	Spring	105	032366	4	Nut, KEPS, 5/16"-18
56	050105	1	Stop	106	030822	4	Wheel, Cart
57	050103	1	Knob, Metal				
58	161043	2	Knob				

**DIAGRAM 2 – SM-10200 2 HP
with Ammeter**

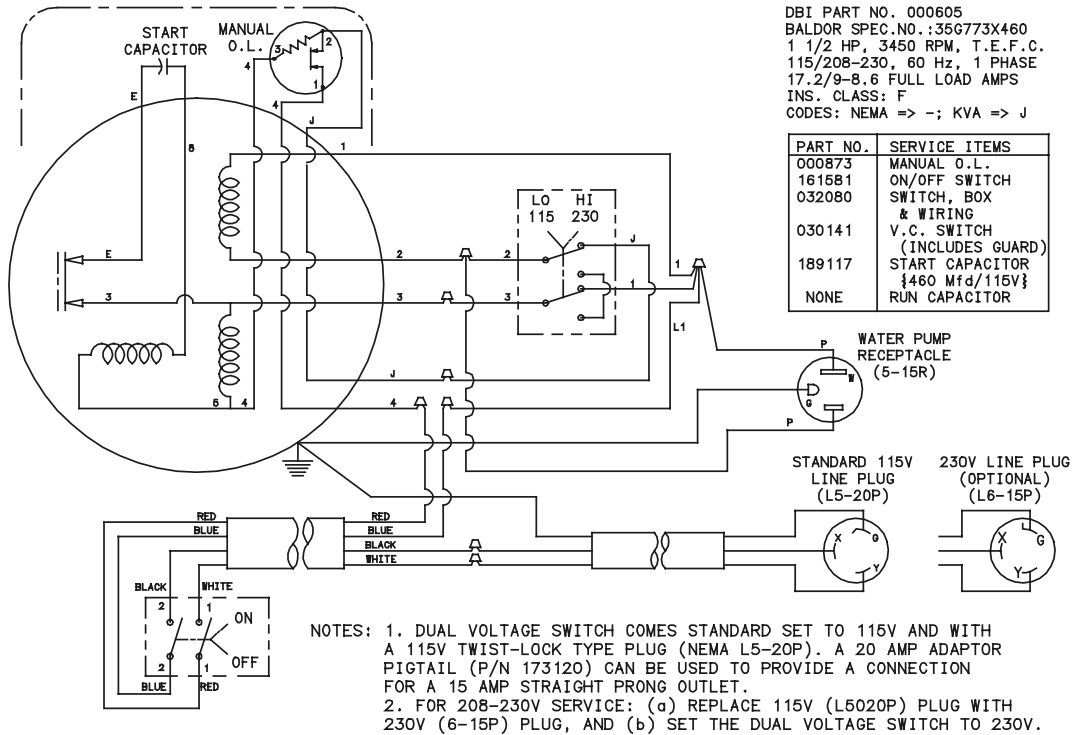


DIAG. LOC.	PART NO.	QTY. REQ.	DESCRIPTION	DIAG. LOC.	PART NO.	QTY. REQ.	DESCRIPTION
--	175056	1	2 HP Motor-Ammeter (Incls 1-11)	6	175086	1	Mounting Bar, L.H.
1	000716	1	2 HP Motor & Switch 115/230V/60/1	7	175087	1	Mounting Bar, R.H.
1a		1	Switch Assy – ONLY	8	020370	6	Capscrew, 1/4"-20 x 3/4"
2	175085	1	Mounting Pad – Foam Rubber	9	020742	6	Washer, Flat 1/4"
3	175079	1	Ammeter & Enclosure	10	020195	6	Locknut, Fiber, 1/4"-20
4	030072	2	Connector Fitting, 90°	11	020998	2 ft	14-3 SO Cord
5	175244	2	Locknut, 1/2" Conduit				

WIRING DIAGRAM SM-10200 with Ammeter

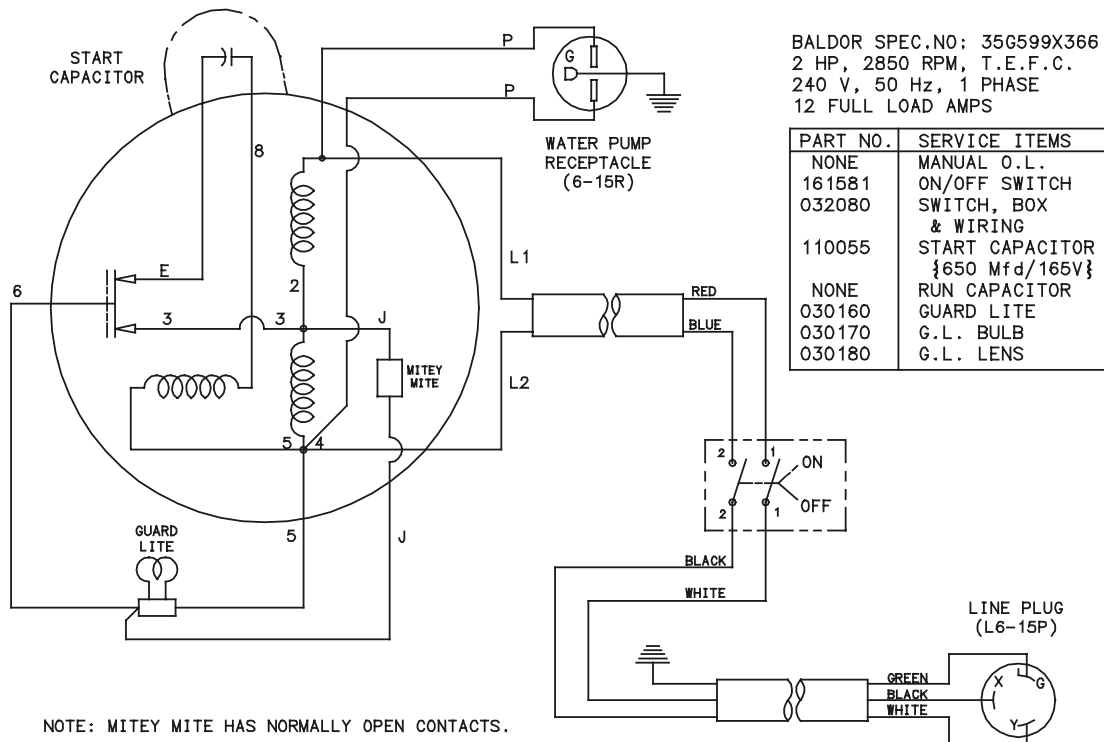


WIRING DIAGRAM SM-10150 (P/N 000605)



PART NO.	SPEC.NO.	HP	RPM	VOLT	HZ	PH	F. L. AMPS
000605 (161702)	35G773X460	1.5	3450	115/208-230	60	1	17.2/9-8.6

WIRING DIAGRAM SM-10200 (P/N 000607)



PART NO.	SPEC.NO.	HP	RPM	VOLT	HZ	PH	F. L. AMPS
000607 (161703)	35G599X366	2	2850	240	50	1	12