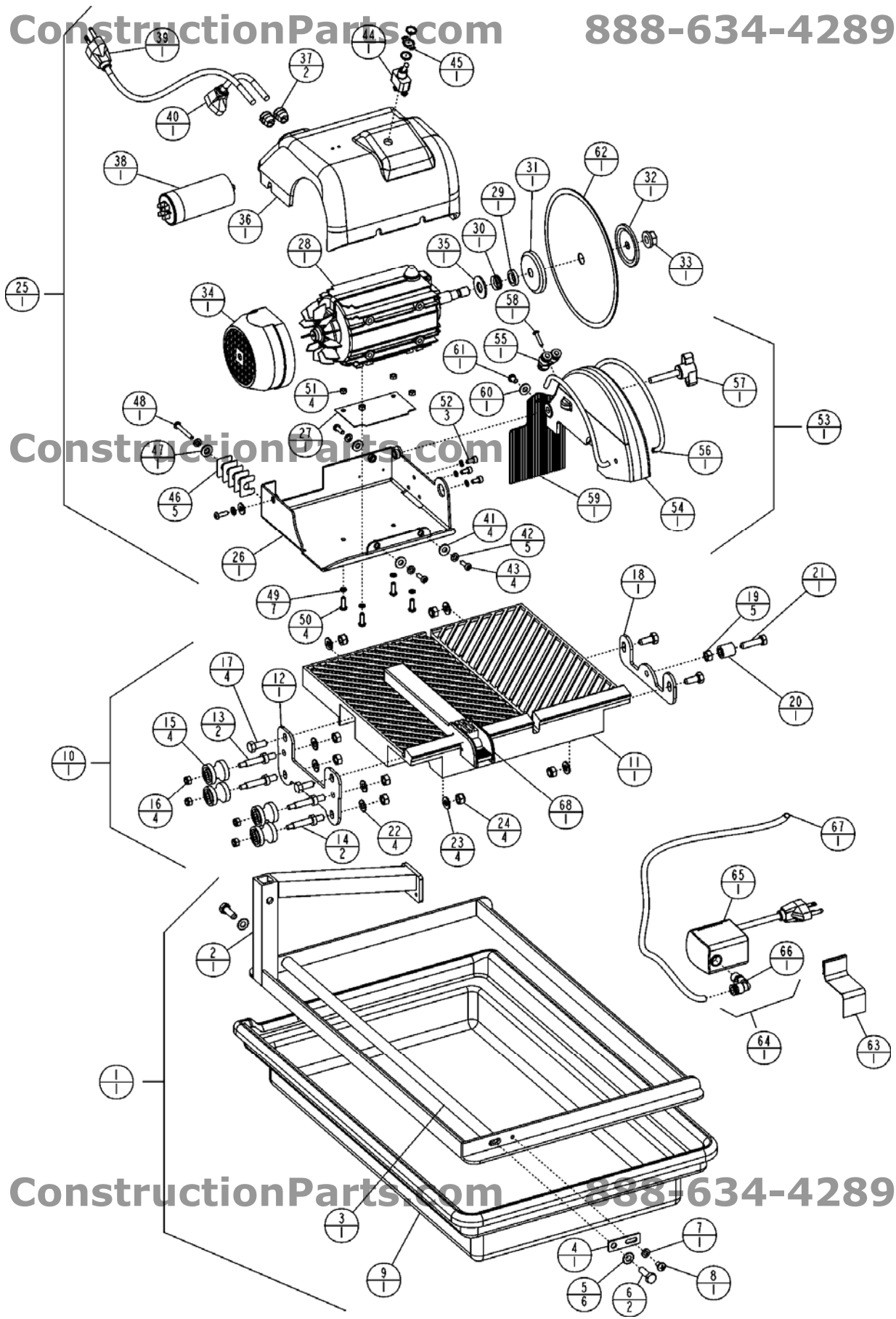


# DIAGRAM 1

ConstructionParts.com

888-634-4289



## DIAGRAM 1 --- TM-75 PARTS LIST

| Loc | P/N           | Description                               | Qty | Loc | P/N           | Description                            | Qty |
|-----|---------------|---|-----|-----|---------------|--|-----|
| 1   | 542 18 51-08* | Frame Assy (incl. 2-8)                    | 1   | 53  | 542 19 54-53* | Assy, Blade Guard (incl. 54-61)        | 1   |
| 2   | 542 18 51-06* | Frame                                     | 1   | 54  | 542 19 54-09  | Guard, Blade 8in - Machined            | 1   |
| 3   | 542 18 51-07* | Bar, Roller Guide                         | 1   | 55  | 542 19 54-55  | Adaptor - Y Water Tube                 | 1   |
| 4   | 542 18 51-59* | Clamp, Roller Bar Adj.                    | 1   | 56  | 542 19 54-49  | Tube, Water 6 x 4 x 280mm              | 2   |
| 5   | 542 17 30-19* | Lockwasher, External Tooth, M8            | 2   | 57  | 542 19 54-56  | Knob, M8 x 45                          | 1   |
| 6   | 542 16 74-78* | Capscrew, Hex Hd M8 x 1.25 x 25mm         | 2   | 58  | 542 19 54-58  | Screw, M4 x 20mm                       | 1   |
| 7   | 542 13 97-46* | Washer, Flat M6                           | 1   | 59  | 542 19 54-24  | Flap, Splash                           | 1   |
| 8   | 542 18 52-55* | Screw, Mach Pan Hd M6 x 1.0 x 10mm        | 1   | 60  | 542 19 54-36  | Washer, Flat .250 SAE                  | 1   |
| 9   | 542 18 51-11* | Water Tray                                | 1   | 61  | 542 19 54-39  | Capscrew, Soc Bt Hd M6 x 1.0 x 10mm SS | 1   |
| 10  | 542 18 51-30* | Cutting Table Assy (incl. 11-24)          | 1   | 62  | 542 18 52-37* | Blade, 8in (200mm) Cont Rim            | 1   |
| 11  | 542 18 51-36* | Cutting Table                             | 1   | 63  | 542 18 51-60* | Bracket, Pump Mounting                 | 1   |
| 12  | 542 18 51-25* | Bracket, U Roller                         | 1   | 64  | 542 18 51-32* | Assy, Water Pump (incl. 65-67)         | 1   |
| 13  | 542 18 51-26* | Stud, Upper U Roller (Set of 2)           | 1   | 65  | 542 18 51-46* | Water Pump 115V/60Hz                   | 1   |
| 14  | 542 18 51-27* | Stud, Lower U Roller (Set of 2)           | 1   | 66  | 542 18 51-58* | Adaptor, 90° Tube - Water Pump         | 1   |
| 15  | 542 18 51-37* | Roller, U Shaped Nylon (Set of 4)         | 1   | 67  | 542 19 56-25  | Tube, Water 8 x 6 x 600mm              | 1   |
| 16  | 542 13 97-45* | Locknut, Fiber M6 x 1.0                   | 4   | 68  | 542 16 98-87* | Guide, Rip - Plain                     | 1   |
| 17  | 542 13 97-37* | Capscrew, Hex Hd M8 x 1.25 x 20mm         | 4   |     |               |  |     |
| 18  | 542 18 51-29* | Bracket, Single Roller                    | 1   |     |               |  |     |
| 19  | 542 17 20-27* | Nut, Hex Hd M8 x 1.25                     | 5   |     |               |  |     |
| 20  | 542 18 51-38* | Roller, Right Side Nylon                  | 1   |     |               |  |     |
| 21  | 542 18 51-31* | Stud, Single Roller                       | 1   |     |               |  |     |
| 22  | 542 17 30-19* | Lockwasher, External Tooth, M8            | 4   |     |               |  |     |
| 23  | 542 17 30-59* | Washer, Flat M8                           | 4   |     |               |  |     |
| 24  | 542 13 97-38* | Locknut, Fiber M8 x 1.25                  | 4   |     |               |  |     |
| 25  | 542 19 54-54  | Power Head Assy w/ Guard (Incl. 26-53)    | 1   |     |               |  |     |
| 26  | 542 19 54-16  | Bracket, Motor Base Wldmnt                | 1   |     |               |  |     |
| 27  | -----         | -----                                     | 1   |     |               |  |     |
| 28  | 542 18 52-21* | Motor Assy, 3/4HP 4.2A 115V (incl. 29-35) | 1   |     |               |  |     |
| 29  | 542 18 52-16* | Spacer Sleeve (Before S/N 417841)         | 1   |     |               |  |     |
|     |               | (See Note 1)                              |     |     |               |  |     |
| 30  | 542 18 52-15* | Seal, Shaft (Before S/N 417841)           | 1   |     |               |  |     |
|     |               | (See Note 1)                              |     |     |               |  |     |
| 31  | 542 18 52-18* | Flange, Inner (Before S/N 417841)         | 1   |     |               |  |     |
|     |               | (See Note 1)                              |     |     |               |  |     |
| --  | 542 19 05-04  | Flange, Inner (S/N 417841 & Later)        | 1   |     |               |  |     |
|     |               | (See Note 1)                              |     |     |               |  |     |
| 32  | 542 18 52-19* | Outer Flange                              | 1   |     |               |  |     |
| 33  | 542 18 52-20* | Nut, Arbor M12                            | 1   |     |               |  |     |
| 34  | 542 18 52-48* | Cover, Fan                                | 1   |     |               |  |     |
| 35  | 542 18 52-74* | Slinger, Shaft                            | 1   |     |               |  |     |
| 36  | 542 19 53-97  | Cover, Motor - Yellow                     | 1   |     |               |  |     |
| 37  | 542 19 54-22  | Bushing, Strain Relief                    | 2   |     |               |  |     |
| 38  | 542 18 52-14* | Capacitor                                 | 1   |     |               |  |     |
| 39  | 542 19 54-32  | Cord, 16/3 SJTW w/ Male Plug              | 1   |     |               |  |     |
| 40  | 542 19 54-25  | Cord, 16/3 SJTW w/ Female Plug            | 1   |     |               |  |     |
| 41  | 542 19 54-36  | Washer, Flat M6                           | 4   |     |               |  |     |
| 42  | 542 19 54-34  | Lockwasher, Split M6                      | 5   |     |               |  |     |
| 43  | 542 19 54-46  | Capscrew, Soc Bt Hd M6 x 1.0 x 16mm SS    | 4   |     |               |  |     |
| 44  | 542 19 54-17  | Switch, Toggle 3/4hp                      | 1   |     |               |  |     |
| 45  | 541 20 71-27  | Plate, Switch                             | 1   |     |               |  |     |
| 46  | 542 19 54-47  | Shim, Brass .020                          | 5   |     |               |  |     |
| 47  | 542 19 54-36  | Washer, Flat M6                           | 1   |     |               |  |     |
| 48  | 542 19 54-38  | Capscrew, Soc Bt Hd M6 x 1.0 x 40mm SS    | 1   |     |               |  |     |
| 49  | 542 19 54-35  | Lockwasher, Split #10                     | 7   |     |               |  |     |
| 50  | 542 19 54-40  | Capscrew, Soc Bt Hd M5 x 0.8 x 16mm SS    | 4   |     |               |  |     |
| 51  | 542 19 54-37  | Nut, Hex Hd M5 x 0.80                     | 4   |     |               |  |     |
| 52  | 542 19 54-41  | Capscrew, Soc Hd M5 x 0.8 x 10mm          | 3   |     |               |  |     |

--- Items Not Shown ---

|  | P/N           | Description                      | Qty |
|--|---------------|----------------------------------|-----|
|  | 542 16 98-66* | Decal, Felker Rip Guide          | 1   |
|  | 542 18 52-62* | Decal, TM-75 Pan                 | 1   |
|  | 542 18 52-63* | Decal, TM-75 Motor Cover         | 1   |
|  | 542 18 52-64* | Decal, Felker 8" [200mm] Guard   | 1   |
|  | 542 18 52-71* | Decal, Warning                   | 1   |
|  | 542 18 52-65* | Decal, Water Pump Outlet         | 1   |
|  | 542 19 04-09* | Decal, Model Name, Serial Number | 1   |
|  | 542 19 54-59  | Wrench, Hex, 4mm                 | 1   |
|  | 542 19 04-24  | Wrench, Hex, 5mm                 | 1   |
|  | 542 18 51-45* | Wrench, Open End [17 x 13mm]     | 1   |
|  | 542 18 52-72* | Wrench, Box/Open End [18 x 10mm] | 1   |
|  | 542 18 70-76* | 90° Adjustable Protractor        | 1   |
|  | 542 18 70-77* | Dual 45° Angle Guide             | 1   |
|  | 542 16 98-70* | Bull Nose Miter Guide            | 1   |

**Note 1: Effective with Tile Saw Serial Number 417841 (Built August 16, 2004):**

Inner Flange, P/N 542190504 Replaced Inner Flange, P/N 542185218, Spacer, P/N 542185216, and Seal, P/N 542185215.  
 Outer Flange, P/N 542190504 can be used for units before Serial Number 417841, but Inner Flange (542185218), Spacer (542185216), and Seal (542185215) must be removed and discarded.

**Note:**

Part Numbers that have an ASTERISK (\*) suffix may not be active 9-digit numbers.  
 The "542" prefix have been added to current 6-digit part numbers and "0" to 8-digit part numbers.